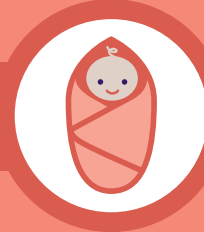


# DELIVERY & POSTPARTUM



## Complete the **Postpartum Infant & Maternal Referral (PIMR)** form



If baby is preterm, low birth weight, or has health concerns or the mother has health or psychosocial concerns, use PIMR form and fax to HealthCare Access Maryland (HCAM): **410-649-0532**

*Access to home visiting, WIC, breastfeeding support, early intervention, behavioral health, and more*

### Confirm **infant safe sleep plan** before discharge

Provide safe sleep education:  
**Alone. Back. Crib.**

**Don't Smoke. No Exceptions.**

Advise patients to keep their homes smoke-free — no cigarettes, marijuana, or vaping.

If family cannot afford crib, use safe sleep referral form and fax to HCAM: **410-649-0532**

*Provides in-home delivery/setup of portable crib and education*

### Screen for **mental health, substance use, and intimate partner violence** at postpartum visit

Screen for substance use and mental health disorders using validated tools and refer to 24-hr Crisis, Information & Referral Line: **410-433-5175**

Screen for intimate partner violence and refer to House of Ruth Maryland's Hotline: **410-889-7884** or call **2-1-1**

### If there is an **infant death**

Use HOPE referral form and fax to HCAM:

**1-888-657-8712** and call

Roberta's House: **410-235-6633**

*Access to peer-led support programs*

### If baby has **developmental concerns**

Call Baltimore Infants and Toddlers Program (BITP): **410-396-1666**

*Provides specialized services for family*

### Counsel about **contraception** before discharge and at postpartum visit

Counsel women about contraception or refer to HCAM:

**410-649-0500**

Refer women to [UChooseBaltimore.org](http://UChooseBaltimore.org) for information.

*Access to information about contraception*